

“Pure Satisfaction”

All Austin Springs products come with a 90-day 100% satisfaction guarantee as well as a 1-year warranty which covers defects in materials and workmanship. At any time within the 90-day trial period, which begins on the date of purchase, you may return your product[s] to the Authorized Austin Springs Dealer from which you made your purchase for a full refund of your purchase price. Thank you for choosing Austin Springs!

Important:

For the first 72 hours, the faucet diverter valve will drip intermittently until the filters become fully saturated. Once they are saturated you should anticipate a residual flow of water each time you use the filter, as the system is vented and designed to clear the line.

Precautions:

Austin Springs is not liable for consequential or incidental damages due to improper installation.

- **Filter is only to be used with cold water.**
 - Never use this system on constant-pressure applications such as ice makers or drinking fountains.
 - If the faucet diverter valve does not fit, you will need to install one of the brass faucet adapters before attaching it. The brass faucet adapters can be tightened using the install tool. (If the supplied brass faucet adapters do not fit, you can obtain the right size from your local hardware store. Be sure to bring your aerator and diverter valve to find the perfect match.)
 - Make sure the rubber washer is in place inside the chrome swivel collar on the diverter valve.
 - If you experience a leak at the hose connection, disconnect and re-seat the hose.
- * Supplied brass faucet adapters and seals are not included in or covered by the system certification.

Model: AS-DW-CT-P

Replacement cartridge: AS-DW-R

Max capacity: 400 Gallons

Max working pressure: 80 psi

Max operating temperature: 90° F

Rated service flow: 0.5 GPM

Do not use with water that is microbiologically unsafe or of unknown water quality without adequate disinfection before or after the system. Systems certified for cyst reduction may be used on disinfected waters that may contain filterable cysts.

Don't Void Your Warranty:

This filter system is designed and tested for use with genuine Austin Springs parts including replacement filters and all hardware (diverter valve). Use of parts from other manufacturers may result in loss of contaminant reduction performance, system damage or failure. Use of parts from other manufacturers will also void your warranty. Please visit your local Authorized Austin Springs Dealer for all replacement parts.

AustinSprings™
clear. Refreshing. Pure.



Installation Instructions

Countertop Water Filter

Model: AS-DW-CT-P

Installation must comply with state and local laws.

Austin Springs

1609 Shoal Creek #200, Austin, Texas 78701

866-238-5855 • www.AustinSprings.com

Manufactured in Facility 1

AS-DW-CT_install_20130214



System Tested and Certified by NSF International against NSF/ANSI Standard 42 and 53 for the reduction of the claims specified on the Performance Data Sheet and at www.nsf.org.

Contents



Filter unit with snap-on cover with diverter valve and hose assembly



Filter cartridges (A & B) pre-installed in filter unit (Model: AS-DW-R).

Your filter comes pre-assembled with cartridges you won't need to change for six months.

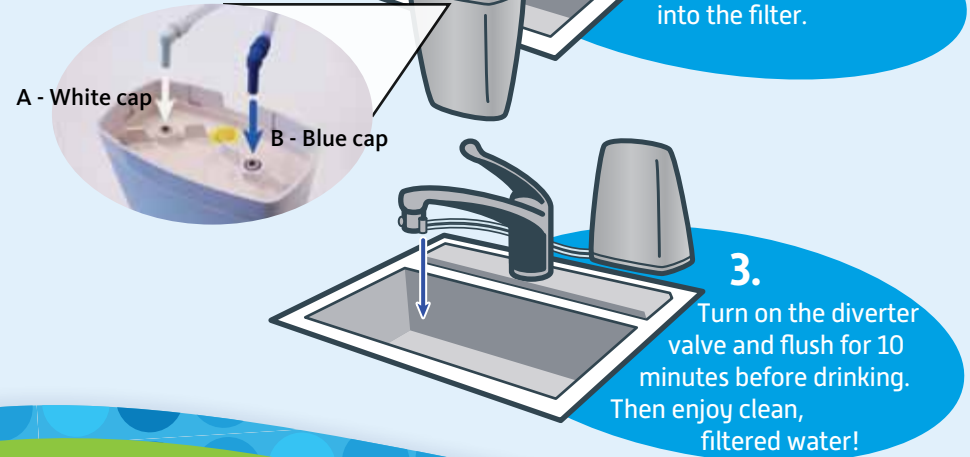
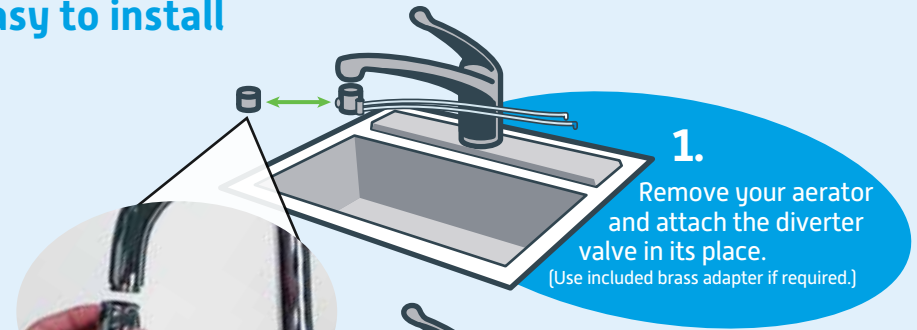


Brass faucet adapters (2 sizes), rubber washers* and install tool (*not included in the system certification)



Threaded cartridge caps (A & B) and O-rings pre-installed in filter unit

Easy to install



Operating

Stop! Does your faucet have a pullout sprayer?

Unfortunately, Austin Springs countertop drinking water filters do not fit on these faucets. In order to have filtered water in your home, please consider our Under Counter filter with a faucet that matches your decor!



Turn on cold water.
Filter is only to be used with cold water.

Pull pin on diverter valve for filtered water. Turn water off when done. If pull pin does not retract, push pin in once water is off.

