



Installation Instructions

AS-DW-UC

Under Counter Water Filter

Chrome, Brushed Nickel and
Oil-Rubbed Bronze

***Welcome to the
Austin Springs experience.***

You are about to enjoy clean,
refreshing filtered water —
just as nature intended.

Installation must comply with state and local laws.



Contents

AustinSprings™
clear. Refreshing. Pure.



Faucet and hoses
(Model: AS-DW-UC)



Filter Unit

The AS-DW-UC water filter system comes in three designer finishes — Chrome, Brushed Nickel and Oil-Rubbed Bronze.



Filter cartridges (A & B)
pre-installed in filter unit
(Model: AS-DW-R)



Filter Unit mounting bracket
(Mounting tape and screws included)



O-ring, washer and nut for faucet installation.

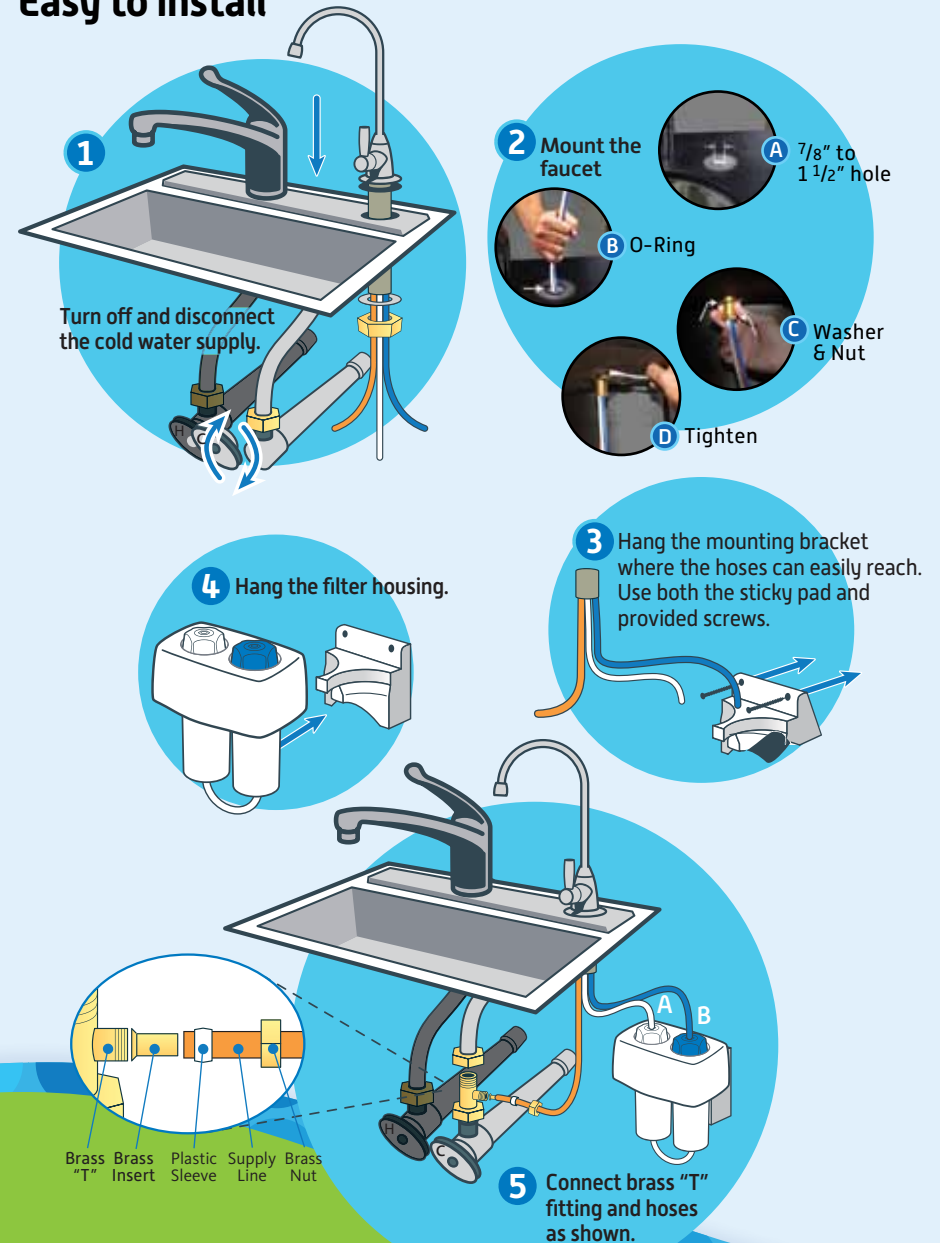


Brass faucet "T" adapter with brass insert, plastic sleeve & brass nut.





Easy to install



AustinSprings™
clear. Refreshing. Pure.

Run your Austin Springs faucet 10 minutes for its first use after installation, then enjoy crisp, clean water!

You should anticipate a residual flow of water each time you use the filter, as the system is vented and designed to clear the line.

“The Austin Springs Guarantee”

All Austin Springs drinking water filter products come with a 90-day 100% satisfaction guarantee as well as a 1-year warranty which covers defects in materials and workmanship. At any time within the 90-day trial period, which begins on the date of purchase, you may return your product[s] to the Authorized Austin Springs Dealer from which you made your purchase for a full refund of your purchase price. Thank you for choosing Austin Springs!

This filter system is designed and tested for use with genuine Austin Springs parts including replacement filters and all hardware. Use of parts from other manufacturers may result in loss of contaminant reduction performance, system damage or failure. Please visit your local Authorized Austin Springs Dealer for all replacement parts.

Use of parts from other manufacturers will also void your warranty.

Important:

For the first 72 hours this faucet will drip intermittently, until the filters become fully saturated. Once they are saturated you should anticipate a residual flow of water each time you use the filter, as the system is vented and designed to clear the line.

Precautions:

Austin Springs is not liable for consequential or incidental damages due to improper installation.

- Never use this system on constant pressure applications such as ice makers or drinking fountains.
- Filter is only to be used with cold water.
- If you experience a leak at the hose connection, disconnect and re-seat the hose.

Model: AS-DW-UC

Replacement cartridge: AS-DW-R

Max capacity: 400 Gallons

Min working pressure: 20 psi [1.40 kg/cm²]

Max working pressure: 80 psi [5.62 kg/cm²]

Max operating temperature: 90° F [32.2 C]

Min operating temperature: 40° F [4.44 C]

Flow Rate: 0.5 GPM

AustinSprings™
clear. Refreshing. Pure.



Chrome Faucet Shown

Do not use with water that is microbiologically unsafe or of unknown water quality without adequate disinfection before or after the system. Systems certified for cyst reduction may be used on disinfected waters that may contain filterable cysts.

The AS-DW-UC comes complete with all filters and attachments needed start to drinking clean, clear water in minutes.

AustinSprings™

clear. Refreshing. Pure.



System Tested and Certified by NSF International against NSF/ANSI Standard 42 and 53 for the reduction of the claims specified on the Performance Data Sheet and at www.nsf.org.

Austin Springs

1609 Shoal Creek #200, Austin, Texas 78701
866-238-5855 • www.AustinSprings.com
Manufactured in Facility 1

AS-DW-UC_inst_20130218